

# TEMPERATURE TESTING XL BURNER

The Fire Company

10 Apollo Street, Warriewood

NSW 2102 Australia

ph +61 2 9997 3050 f +61 2 9997 6050

e info@thefirecompany.com.au

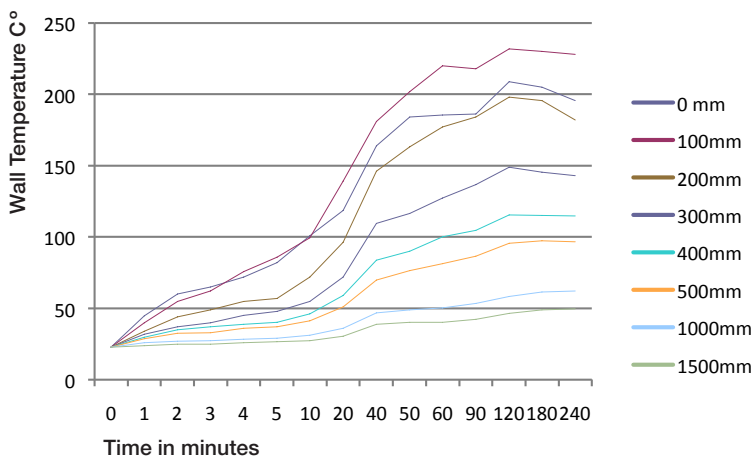
w www.ecosmartfire.com

## Conditions of set-up

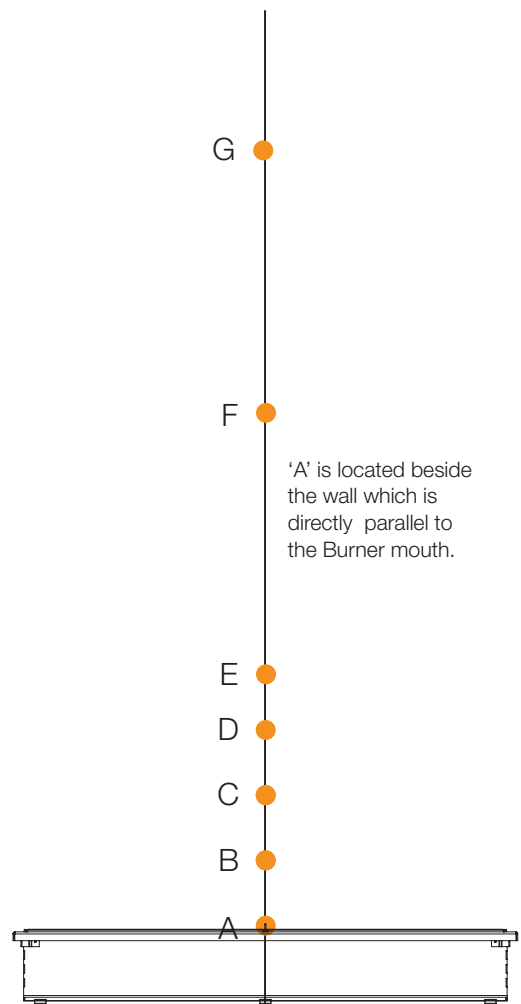
The XL Burner was fitted directly beside a non-combustible brick wall surface.

Temperatures have been measured from the wall surface at different heights and different times.

### 1. Measure of wall temperature variations with the XL Burner running on Max.



Average humidity in the room = 45%



### 2. Measure of wall temperature variations above the XL Burner based on 240 minutes.

Positions	A = 0	B = 100mm	C = 200mm	D = 300mm	E = 400mm	F = 500mm	G = 1000mm	H = 1500mm
Highest temperature	209°	232°	198°	148.9°	115.6°	97.3°	62.1°	49.8°
Average temperature	126.3°	139.4°	111.7°	85.3°	68.9°	59.1°	40.6°	34.2°
Average raised temperature	103.3°	116.4°	88.7°	62.3°	45.9°	36.1°	17.6°	11.2°

Ambient room temperature average = 23°C

# TEMPERATURE TESTING XL BURNER INSIDE A FIREBOX

The Fire Company

10 Apollo Street, Warriewood  
NSW 2102 Australia

ph +61 2 9997 3050 f +61 2 9997 6050

e info@thefirecompany.com.au

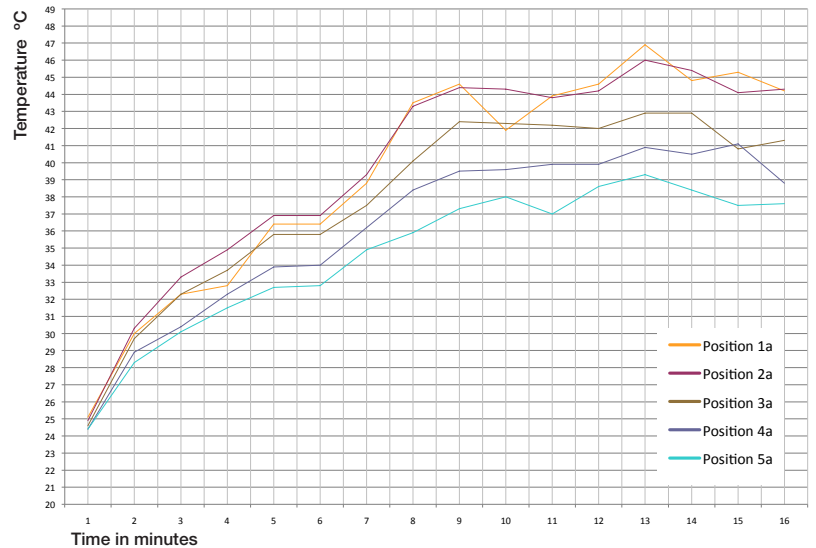
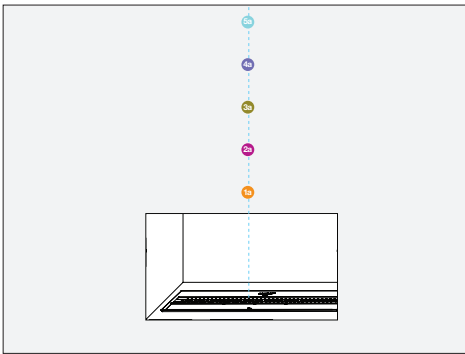
w www.ecosmartfire.com

## Conditions of set-up

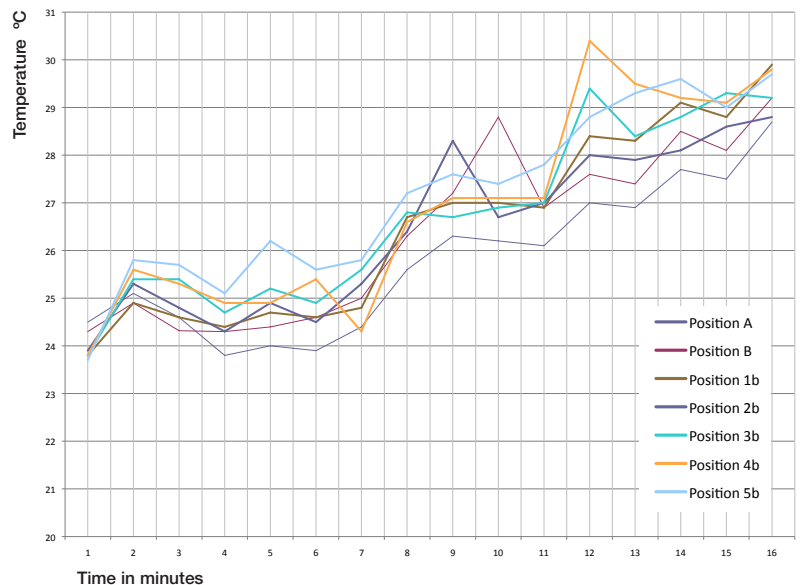
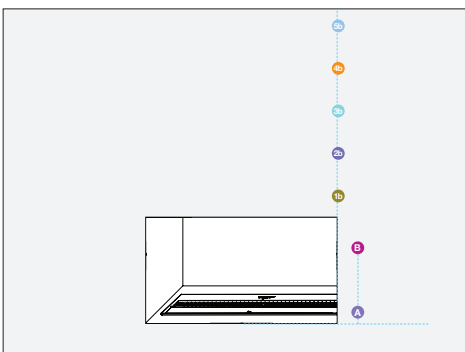
The XL Burner was fitted directly into a stainless steel firebox which was installed into a wall made from MDF.

Temperatures have been measured from directly in front of the fireplace (500mm above burner mouth).

### 1. Measure of MDF surface temperature variations with the XL Burner running on Max. Temperature taken from the centre of the firebox.



### 2. Measure of MDF surface temperature variations with the XL Burner running on Max. Temperature taken from the side of the firebox.



# TEMPERATURE TESTING XL BURNER INSIDE A FIREBOX

The Fire Company

10 Apollo Street, Warriewood

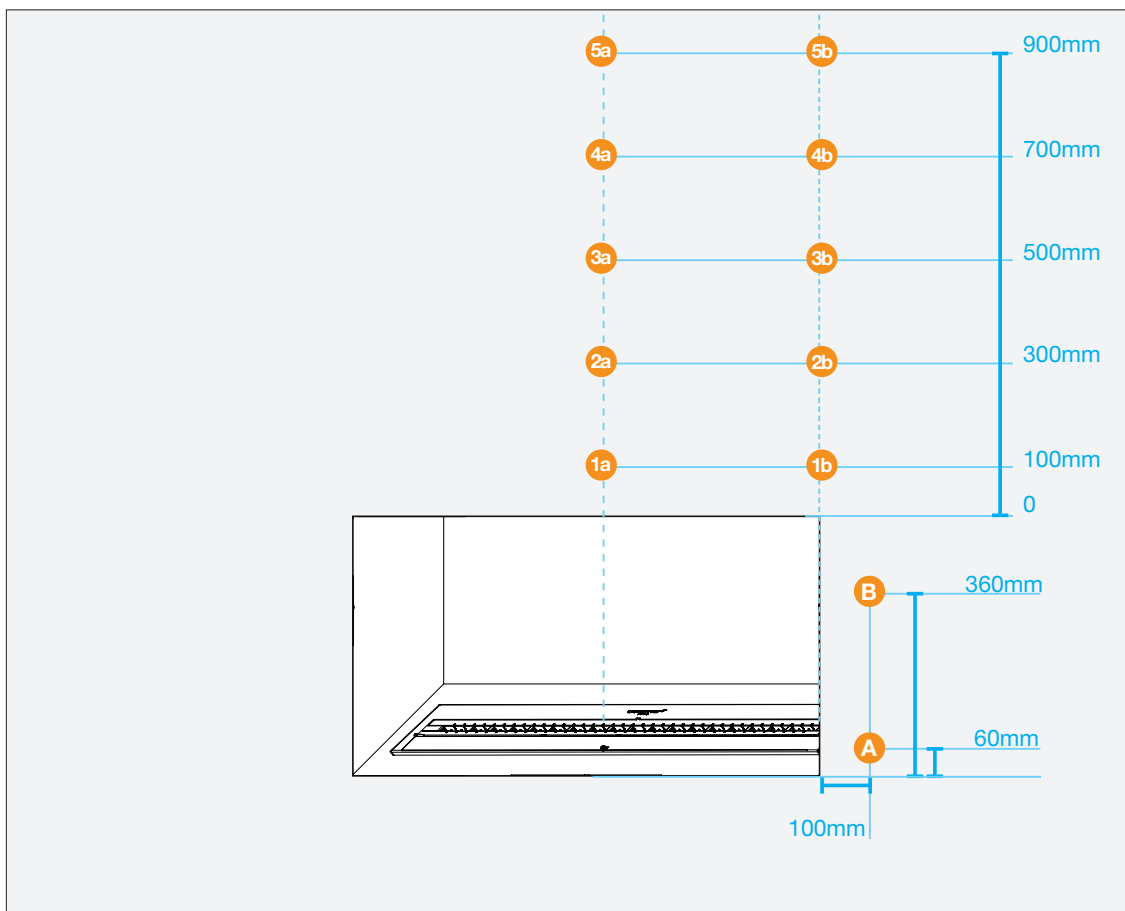
NSW 2102 Australia

ph +61 2 9997 3050 f +61 2 9997 6050

e info@thefirecompany.com.au

w www.ecosmartfire.com

### 3. Positions on the MDF surface surrounding the firebox where temperatures were measured.



### 4. Measure of MDF surface temperature variations around the XL Burner based on 240 minutes.

Positions	A	B	1a	1b	2a	2b	3a	3b	4a	4b	5a	5b
Highest temperature	28.7°	29.2°	46.9°	29.9°	45.4°	28.8°	42.9°	29.4°	41.1°	30.4°	39.3°	29.7°
Average temperature	25.8°	26.4°	39.5°	26.5°	39.8°	26.4°	37.9°	26.7°	36.2°	26.9°	34.6°	27.1°
Average raised temperature	2.8°	3.4°	16.5°	3.5°	16.8°	3.4°	14.9°	2.8°	13.2°	3.9°	11.6°	4.1°

Ambient room temperature average = 23°C